

# ALUMLIGHT

Formwork Engineering

Professionality / Quality / Service



Aluminum **RASTA**







## RASTA forms – benefits for the contractor on site:

- Weighs about 23 kg / sq. m. 45% less than a steel form.
- Durable with very low wear and tear.
- High quality plywood coating that allows many castings.
- Can be lifted by any worker.
- Comes with complementary accessories such as clamps, crane adapter, walkway bracket, push and pull props.
- Shortens crane time or eliminates the need of crane.
- Eliminates the need for professional woodworkers.
- Fully adapted to working with steel RASTO forms.
- Withstands pressure of up to 60 kn / sq. m.
- Customized specifically for each project.

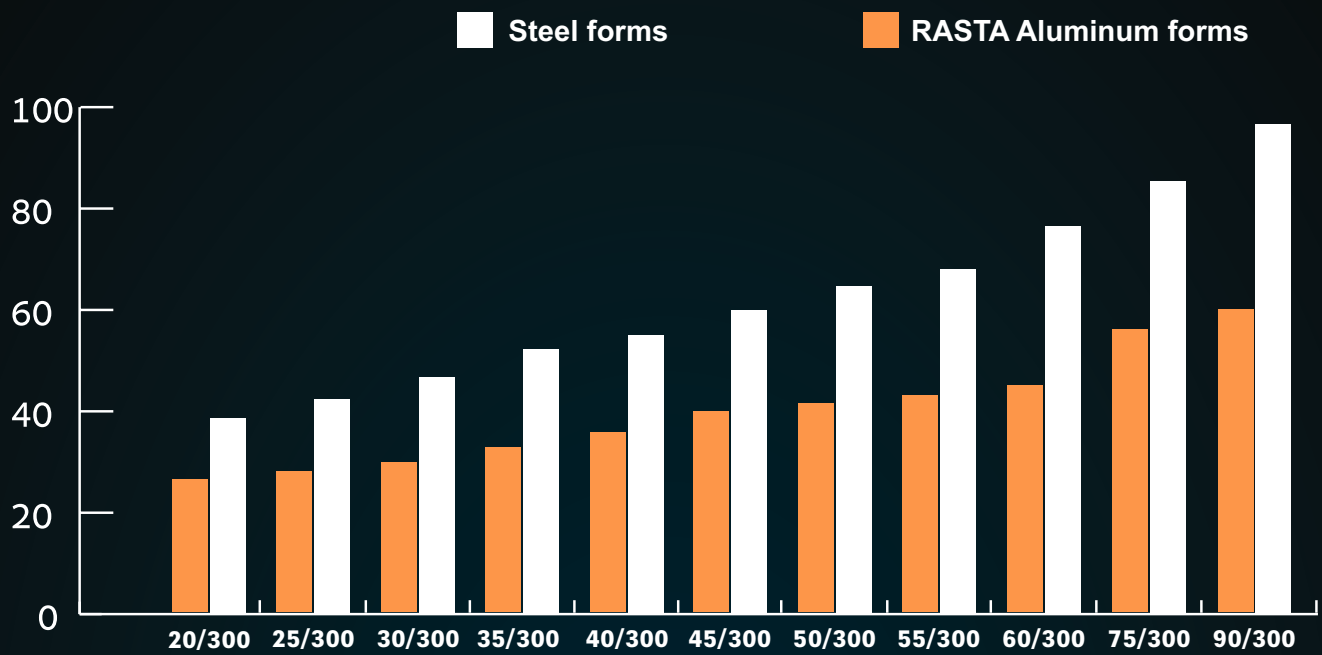








# Comparison of Weight Table – RASTA



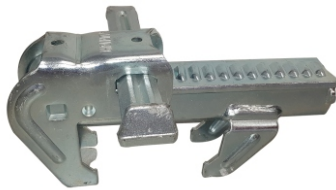
Weight of Steel Forms	Weight of Aluminum RASTA forms	Form size
39 kg	26 kg	20/300
42 kg	28 kg	25/300
47 kg	31 kg	30/300
51 kg	34 kg	35/300
54 kg	36 kg	40/300
60 kg	40 kg	45/300
64 kg	41 kg	50/300
68 kg	44 kg	55/300
74 kg	46 kg	60/300
83 kg	56 kg	75/300
96 kg	58 kg	90/300



**Corner clamp**



**Regular clamp**



**RASTA Panel**



**R-adjusting strut 3 M**



**Walkway bracket**



**Crane hook**



**Cork for hole**



**Binding screw for maler**



**Maler 1.2 M**



**R-adjusting strut 4.5 M**



**Internal corner panel 90°**



**Axial corner**



**Metal case for accessories**



**Swivel plate**



**Tie Rod**





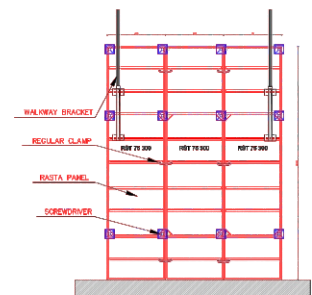
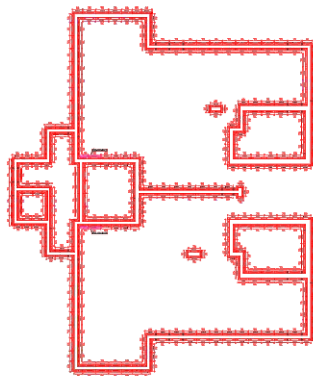
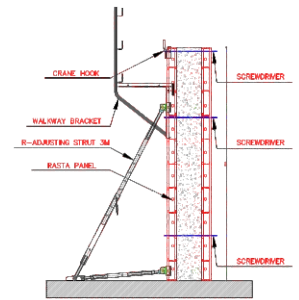
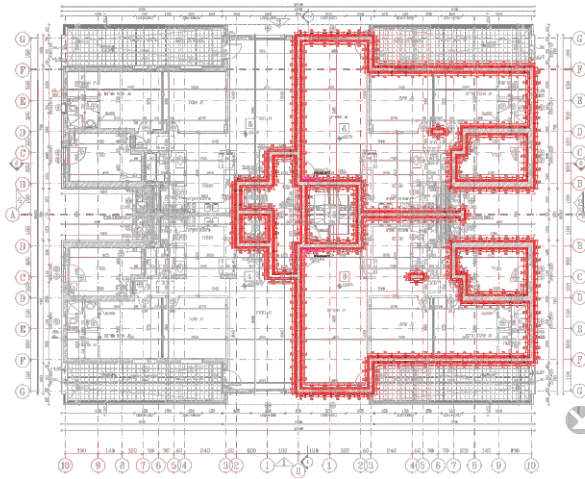














Aluminum beams and supporting props to support slabs and beams. A support system consisting of a horizontal system of aluminum beams and support props with high capacity enable large spans and reduce quantity of equipment, time and price.

## POST & BEAM Slab Support System – benefits for the contractor :

- High load carrying capacity of the props and strong beams allows larger spans between the props.
- The system is extremely flexible and can fit any building. This flexibility is created by using regular and double heads that allow maximum flexibility.



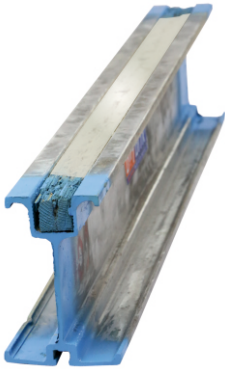








Aluminum beam 19.cm



Aluminum beam 16.5.cm



Aluminum beam 14.cm



Fork head



Europain H-20 Beam



Universal head



2 ton, 3 m post shore



2 ton, 3.60 m post shore



3 ton, 3.5 m post shore





The figure shows a complex floor plan of a building with a central corridor system. The plan is divided into several large sections, each containing smaller rooms and corridors. The central corridor is highlighted in green, while the surrounding rooms are yellow. The walls are shown in red. Numerous small text labels are scattered throughout the plan, indicating specific locations or measurements. The plan is oriented with the main entrance at the top center.

לעיון בלבד!

[illegible]

Architectural floor plan of a building with a complex layout, including a central staircase and multiple rooms. The plan is annotated with numerous numerical values and labels, likely representing structural or environmental data. A legend in the bottom right corner explains some of the symbols used.

Legend:

- 11-200-0000-00
- 11-200-0000-01
- 11-200-0000-02
- 11-200-0000-03
- 11-200-0000-04
- 11-200-0000-05
- 11-200-0000-06
- 11-200-0000-07
- 11-200-0000-08
- 11-200-0000-09
- 11-200-0000-10
- 11-200-0000-11
- 11-200-0000-12
- 11-200-0000-13
- 11-200-0000-14
- 11-200-0000-15
- 11-200-0000-16
- 11-200-0000-17
- 11-200-0000-18
- 11-200-0000-19
- 11-200-0000-20
- 11-200-0000-21
- 11-200-0000-22
- 11-200-0000-23
- 11-200-0000-24
- 11-200-0000-25
- 11-200-0000-26
- 11-200-0000-27
- 11-200-0000-28
- 11-200-0000-29
- 11-200-0000-30
- 11-200-0000-31
- 11-200-0000-32
- 11-200-0000-33
- 11-200-0000-34
- 11-200-0000-35
- 11-200-0000-36
- 11-200-0000-37
- 11-200-0000-38
- 11-200-0000-39
- 11-200-0000-40
- 11-200-0000-41
- 11-200-0000-42
- 11-200-0000-43
- 11-200-0000-44
- 11-200-0000-45
- 11-200-0000-46
- 11-200-0000-47
- 11-200-0000-48
- 11-200-0000-49
- 11-200-0000-50
- 11-200-0000-51
- 11-200-0000-52
- 11-200-0000-53
- 11-200-0000-54
- 11-200-0000-55
- 11-200-0000-56
- 11-200-0000-57
- 11-200-0000-58
- 11-200-0000-59
- 11-200-0000-60
- 11-200-0000-61
- 11-200-0000-62
- 11-200-0000-63
- 11-200-0000-64
- 11-200-0000-65
- 11-200-0000-66
- 11-200-0000-67
- 11-200-0000-68
- 11-200-0000-69
- 11-200-0000-70
- 11-200-0000-71
- 11-200-0000-72
- 11-200-0000-73
- 11-200-0000-74
- 11-200-0000-75
- 11-200-0000-76
- 11-200-0000-77
- 11-200-0000-78
- 11-200-0000-79
- 11-200-0000-80
- 11-200-0000-81
- 11-200-0000-82
- 11-200-0000-83
- 11-200-0000-84
- 11-200-0000-85
- 11-200-0000-86
- 11-200-0000-87
- 11-200-0000-88
- 11-200-0000-89
- 11-200-0000-90
- 11-200-0000-91
- 11-200-0000-92
- 11-200-0000-93
- 11-200-0000-94
- 11-200-0000-95
- 11-200-0000-96
- 11-200-0000-97
- 11-200-0000-98
- 11-200-0000-99
- 11-200-0000-100
- 11-200-0000-101
- 11-200-0000-102
- 11-200-0000-103
- 11-200-0000-104
- 11-200-0000-105
- 11-200-0000-106
- 11-200-0000-107
- 11-200-0000-108
- 11-200-0000-109
- 11-200-0000-110
- 11-200-0000-111
- 11-200-0000-112
- 11-200-0000-113
- 11-200-0000-114
- 11-200-0000-115
- 11-200-0000-116
- 11-200-0000-117
- 11-200-0000-118
- 11-200-0000-119
- 11-200-0000-120
- 11-200-0000-121
- 11-200-0000-122
- 11-200-0000-123
- 11-200-0000-124
- 11-200-0000-125
- 11-200-0000-126
- 11-200-0000-127
- 11-200-0000-128
- 11-200-0000-129
- 11-200-0000-130
- 11-200-0000-131
- 11-200-0000-132
- 11-200-0000-133
- 11-200-0000-134
- 11-200-0000-135
- 11-200-0000-136
- 11-200-0000-137
- 11-200-0000-138
- 11-200-0000-139
- 11-200-0000-140
- 11-200-0000-141
- 11-200-0000-142
- 11-200-0000-143
- 11-200-0000-144
- 11-200-0000-145
- 11-200-0000-146
- 11-200-0000-147
- 11-200-0000-148
- 11-200-0000-149
- 11-200-0000-150
- 11-200-0000-151
- 11-200-0000-152
- 11-200-0000-153
- 11-200-0000-154
- 11-200-0000-155
- 11-200-0000-156
- 11-200-0000-157
- 11-200-0000-158
- 11-200-0000-159
- 11-200-0000-160
- 11-200-0000-161
- 11-200-0000-162
- 11-200-0000-163
- 11-200-0000-164
- 11-200-0000-165
- 11-200-0000-166
- 11-200-0000-167
- 11-200-0000-168
- 11-200-0000-169
- 11-200-0000-170
- 11-200-0000-171
- 11-200-0000-172
- 11-200-0000-173
- 11-200-0000-174
- 11-200-0000-175
- 11-200-0000-176
- 11-200-0000-177
- 11-200-0000-178
- 11-200-0000-179
- 11-200-0000-180
- 11-200-0000-181
- 11-200-0000-182
- 11-200-0000-183
- 11-200-0000-184
- 11-200-0000-185
- 11-200-0000-186
- 11-200-0000-187
- 11-200-0000-188
- 11-200-0000-189
- 11-200-0000-190
- 11-200-0000-191
- 11-200-0000-192
- 11-200-0000-193

למצינו בלרדו

[illegible]



## Alumlight – Company vision

Alumlight strives to be a high quality, professional company providing efficient engineering solutions in the field of form industry and meeting its clients' every need.

### Our goals:

- Being a leader in the form industry.
- Provide optimal engineering solutions using top-quality equipment and standards.
- Providing high-quality, professional service to our clients.
- Creating a positive, supportive and efficient work environment in a profitable organization.
- Working fairly, transparently and adamantly to promote our goals for the benefit of clients and employees.
- Employ skilled professionals who wish to excel at what they do.

*Alumlight  
where professionalism, quality and  
excellent service meet.*

Regards, CEO and owner  
Yoram Raz



Tel : +972-4679963 Fax : +972-46769964 P.O.B 435, Kfar Tavor 1524100, Israel  
email: [office@alumlight.co.il](mailto:office@alumlight.co.il) website: [www.alumlight.co.il](http://www.alumlight.co.il)



For updates and more projects, search for us on Facebook  
Alumlight formwork engineering

